

Whānau News

Wharenui School 32 Matipo St Riccarton Christchurch ph: 348 5263

www.wharenui.school.nz

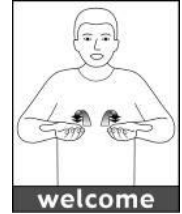
email: office@wharenui.school.nz

[Wharenui facebook Official](#) or [Wharenui PTA](#) or [PTC App](#)

Term 4: Wednesday 18 October/ Rāapa 18 Whiringa ā rāngi /Aso lulu 18 Oketopa /Myerkules 18 Oktobra 2017

Together we learn and grow. Me akotahi hei oranga mo te katoa.

Kia ora, Talofa, Ni hao, Malo e lelei, Kia orana, Sawatdee, Sua s'dei, Ahn nyeong, Salam Aalaikum, Salam, Ayo Bowan, Annyeong- hasimnikka, Kamusta, Namastē, Fakaalofa atu, Hola, Bula Vinaka, Χαίρετε, Ola, Halo, Selamat siang,



Welcome back to the last term of the year. This is always the busiest term and we are off to a flying start. The school term ends on Friday 15 December at 12pm. Please mark this on your calendars.

Next Wednesday everyone is invited to our “Fish and Chip” night 5:30-7pm. Bring kai/ food/takeaways for your family to share. If it is fine we will eat outside in the picnic area . If it is cold, we will eat in the hall.

After eating, you are welcome to visit your child’s class, where your child can show off the work they have been doing, and you can meet other parents.

The group of children in the photo are working with Sandi, our English as a Second Language Teacher. They are translating the word “half” into their own language. Many children have needed reminders to bring their sunhats. Sunhats are compulsory in all New Zealand primary schools in terms 1 and 4.

Please remember school finishes at 3pm. If you are going to be late for any reason you need to let Helen in the office know.



This weekend is a long weekend for Labour Weekend so there is no school on Monday.

Have a great week . . .

Noho ora mai ra

Gretchen

WELCOME / HAËRE MAI / AFIO MAI

Welcome /Haëre mai/ Afio Mai / Malbuhay to . . .Alistair to Kauri, Grace and Alijah to Pohutukawa/R1

We are delighted to have you and your family / whānau/ aiga at Wharenui.



WHO'S CELEBRATING A BIRTHDAY?

Ngā mihi n ui i tō rā whānau/ la manuia lou aso fanau/ Maligayang bati!

Happy Birthday and best wishes to. . . Lennon of Rata who was 7 years old on Monday, **Kataraina** of Kahikatea who was 13 years old on Monday,

Diamond of Matai iti who is 8 years old today, **Neata** of Kahikatea who will be 12 years old on Friday, **Unique** of Pohutukawa who will be 6 years old on Sunday and **Taaliah** of Totara who will be 10 years old on Sunday.



TE ARA TIKA O WHARENUI- THE RIGHT WAY FOR WHARENUI

The School value we are promoting for the next fortnight is . . . **Respect / Whakaute**. At Wharenui School this means: being kind, using your manners, telling the truth, treating others how you would like to be treated, looking after your things- yours and other peoples.

What does Respect/Whakaute, mean to your family/whānau/aiga?



WHO CAN HELP YOU ?

We are very lucky at Wharenui School to have two lovely people who can help you.

Kirstin Lambie is our Nurse. She can help you with children's health issues- like bed wetting, sleep, skin conditions, eating and nutrition, allergies, behaviour and emotional concerns. She is able to meet you at home, school, or work to provide health support, assessment, advice and to coordinate family health, school or support services if required. You can contact Kirstin through school or ph: 03 3836877 ext 99614. **Sue Elliott is our Social worker in Schools**. Sue is able to help with social/ behaviour problems, finances, overcrowding, family violence, drug and alcohol problems to name a few. You can contact Sue ph: 021 332046



These services are free and confidential to students and their families.

ANY WORRIES OR CONCERNS ABOUT YOUR CHILD . . .

Please see your child's teacher first if you have any concerns about your child.



PTA

A very kind parent has donated 250 ml Calci Yum Chocolate milk for us to sell at the Canteen. The price is \$1.50 and is available for a limited time.



KIDSCAN NITBUSTER PROGRAMME

This is the last term that the Kidscan Nitbuster Programme will be running at school. If your family needs a treatment procedure please contact Shelley and a home visit can be arranged. Product will also be available from the School office. Shelley: Kidscan health worker 021 193 5962 or email: shelley.kidscan@gmail.com

VICTIM SUPPORT RAFFLE

We are selling raffle tickets for the Victim Support Group. 1st prize: Honda HR- V S, 2nd prize: Espresso machine ,3rd Prize: Michael Hill pendant ,4th prize: Luxury weekend in Wellington, 5th prize: Spark i phone 7, 6th prize: Panasonic 40 " TV,7th Prize: \$500 Bunnings voucher, 8th prize: \$500 Westfield voucher

Bonus prize: Fiji holiday for 2. Tickets are \$5 or \$20 for a book of 5. See Helen in the office.



Important Dates

Fri Oct 20: Assembly 10:30am –van Asch this week
Mon Oct 23:Labour Day Holiday
Wed 25 Oct: Senior Athletics /Fish and Chip night 5:30pm until 7pm/
Thurs Oct 26:Senior School Athletics
Fri Oct 27: Teddy Bear's Picnic/ Mufti day Senior Idol
Mon Nov 6: Mobile Library
Fri Dec 15 : School finishes at 12 pm for the Summer Break

